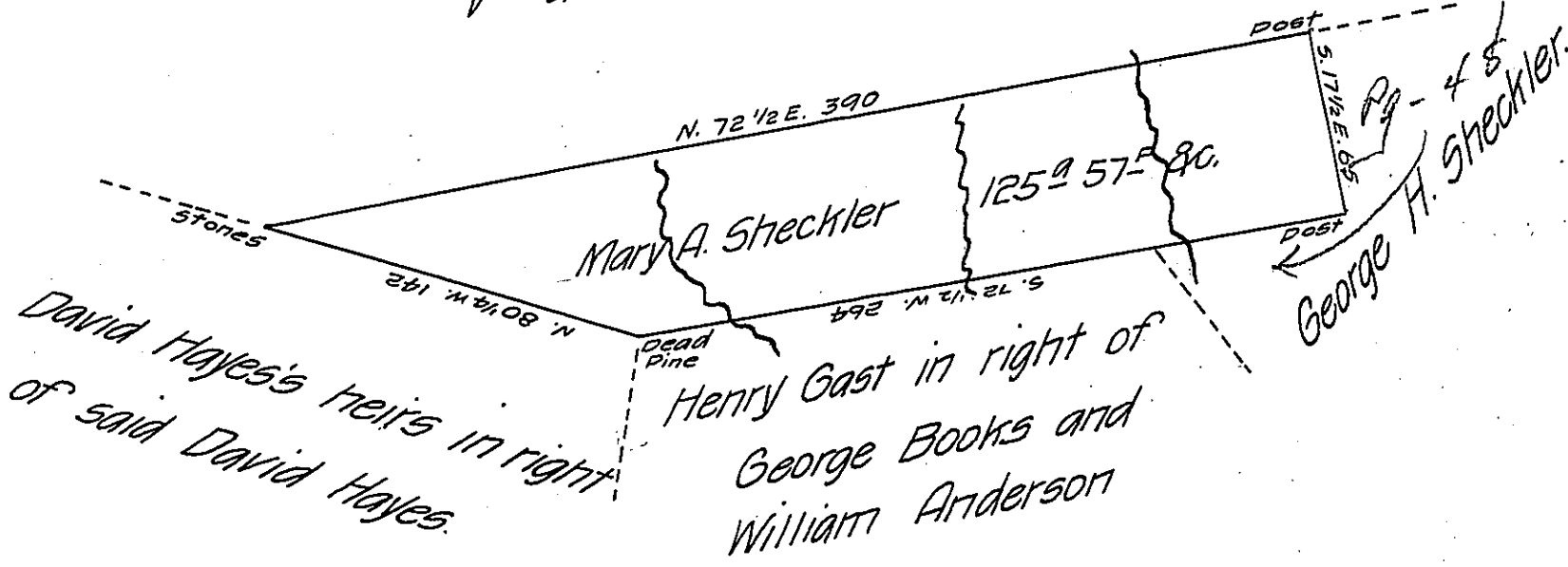


V-a-c-a-n-t



A DRAFT - of a tract of land situate in Lewis township Union county. Containing one hundred and twenty five acres and fifty seven perches and the allowance of six per cent for roads &c. Surveyed the 10th day of November A.D. 1868 in pursuance of a warrant granted to Mary A. Sheckler bearing date the 14th day of January A.D. 1867

Conrad Sheckler C.S.

IN TESTIMONY that the above is a copy of the original remaining on file in the Department of Internal Affairs of Pennsylvania, made conformably to an Act of Assembly approved the 16th day of February, 1833, I have hereunto set my Hand and caused the Seal of said Department to be affixed at Harrisburg, this eleventh day of April 1907

Isaac N. Brown
Secretary of Internal Affairs.